

SERVICE MANUAL Level 1&2

NOKIA 6267

RM-210

Transceiver characteristics:

Band:

EGSM: Quad-band 850/900/1800/1900MHz

WCDMA: 850/2100MHz

Display:

Main LCD: 5.588cm QVGA (2.2") (240x320 pixel); 16M colors

Second LCD: 3.4544cm (1.36") 128x160

Camera:

Camera: 2.0 Megapixel, Flash and 8x zoom

Operating System:

Series 40

Connections:

Wireless: Bluetooth

Connector: Mini USB Connector; AV Connector

Memory:

MicroSD™ (max 4GB)



Transceiver with BL-5c Li-Ion battery pack

Talk time	Standby	Note
GSM: up to 6.5h WCDMA: up to 2.75h	up to 10days	Depends on network parameters

TABLE OF CONTENTS

	Page
1. CHANGE HISTORY	3
2. COPYRIGHT	3
3. WARNINGS AND CAUTIONS	4
4. ESD PROTECTION	4
5. CARE AND MAINTENANCE	5
6. BATTERY INFORMATION	5
7. EXPLODED VIEW	6
8. SPARE PARTS OVERVIEW	7
9. HANDLING WASTE / RECYCLING IN NOKIA REPAIR SERVICE	8
10. LEVEL 2 SOLDER COMPONENTS	9
11. SERVICE TOOLS	10
12. SW-UPDATE	11
13. UPPER BLOCK DISASSEMBLY	12
14. UPPER BLOCK ASSEMBLY HINTS	17
15. LOWER BLOCK DISASSEMBLY	18

1. CHANGE HISTORY

Status	Version No.	Date	Comments
Draft	0.1	15.Jun.2007	Initial draft
Approved	2.0	28.Jun.2007	Approval
Approved	3.0	23.July.2007	Exploded view & Spare Parts overview changed (A3 Assy structure)

The purpose of this document is to help NOKIA service levels 1 and 2 workshop technicians to carry out service to NOKIA products. This Service Manual is to be used only by authorized NOKIA service suppliers, and the content of it is confidential. Please note that NOKIA provides also other guidance documents (e.g. Service Bulletins) for service suppliers, follow these regularly and comply with the given instructions.

While every endeavor has been made to ensure the accuracy of this document, some errors may exist. If you find any errors or if you have further suggestions, please notify NOKIA using the address below:

CMO Operation & Logistics
Training and Vendor Development
Multimedia Creation & Support
<mailto:Service.Manual@nokia.com>

Please keep in mind also that this documentation is continuously being updated and modified, so watch always out for the newest version.

2. COPYRIGHT

Copyright © 2007 Nokia. All rights reserved.

Reproduction, transfer, distribution or storage of part or all of the contents in this document in any form without the prior written permission of Nokia is prohibited.

Nokia, Nokia Connecting People, and Nokia X and Y are trademarks or registered trademarks of Nokia Corporation. Other product and company names mentioned herein may be trademarks or tradenames of their respective owners.

Nokia operates a policy of continuous development. Nokia reserves the right to make changes and improvements to any of the products described in this document without prior notice.

Under no circumstances shall Nokia be responsible for any loss of data or income or any special, incidental, consequential or indirect damages howsoever caused.

The contents of this document are provided "as is". Except as required by applicable law, no warranties of any kind, either express or implied, including, but not limited to, the implied warranties of merchantability and fitness for a particular purpose, are made in relation to the accuracy, reliability or contents of this document. Nokia reserves the right to revise this document or withdraw it at any time without prior notice. The availability of particular products may vary by region.

IMPORTANT

This document is intended for use by qualified service personnel only.

3. WARNINGS AND CAUTIONS

Warnings and Cautions

Please refer to the phone's user guide for instructions relating to operation, care and maintenance including important safety information. Note also the following:

Warnings:

1. CARE MUST BE TAKEN ON INSTALLATION IN VEHICLES FITTED WITH ELECTRONIC ENGINE MANAGEMENT SYSTEMS AND ANTI-SKID BRAKING SYSTEMS. UNDER CERTAIN FAULT CONDITIONS, EMITTED RF ENERGY CAN AFFECT THEIR OPERATION. IF NECESSARY, CONSULT THE VEHICLE DEALER/MANUFACTURER TO DETERMINE THE IMMUNITY OF VEHICLE ELECTRONIC SYSTEMS TO RF ENERGY.
2. THE HANDPORTABLE TELEPHONE MUST NOT BE OPERATED IN AREAS LIKELY TO CONTAIN POTENTIALLY EXPLOSIVE ATMOSPHERES, EG PETROL STATIONS (SERVICE STATIONS), BLASTING AREAS ETC.
3. OPERATION OF ANY RADIO TRANSMITTING EQUIPMENT, INCLUDING CELLULAR TELEPHONES, MAY INTERFERE WITH THE FUNCTIONALITY OF INADEQUATELY PROTECTED MEDICAL DEVICES. CONSULT A PHYSICIAN OR THE MANUFACTURER OF THE MEDICAL DEVICE IF YOU HAVE ANY QUESTIONS. OTHER ELECTRONIC EQUIPMENT MAY ALSO BE SUBJECT TO INTERFERENCE.

Cautions:

1. Servicing and alignment must be undertaken by qualified personnel only.
2. Ensure all work is carried out at an anti-static workstation and that an anti-static wrist strap is worn.
3. Use only approved components as specified in the parts list.
4. Ensure all components, modules screws and insulators are correctly re-fitted after servicing and alignment.
5. Ensure all cables and wires are repositioned correctly.

4. ESD PROTECTION

Nokia requires that service points have sufficient ESD protection (against static electricity) when servicing the phone.

Any product of which the covers are removed must be handled with ESD protection. The SIM card can be replaced without ESD protection if the product is otherwise ready for use.

To replace the covers ESD protection must be applied.

All electronic parts of the product are susceptible to ESD. Resistors, too, can be damaged by static electricity discharge.

All ESD sensitive parts must be packed in metallized protective bags during shipping and handling outside any ESD Protected Area (EPA).

Every repair action involving opening the product or handling the product components must be done under ESD protection.

ESD protected spare part packages MUST NOT be opened/closed out of an ESD Protected Area.

For more information and local requirements about ESD protection and ESD Protected Area, contact your local Nokia After Market Services representative.



5. CARE AND MAINTENANCE

This product is of superior design and craftsmanship and should be treated with care. The suggestions below will help you to fulfil any warranty obligations and to enjoy this product for many years.

- Keep the phone and all its parts and accessories out of the reach of small children.
- Keep the phone dry. Precipitation, humidity and all types of liquids or moisture can contain minerals that will corrode electronic circuits.
- Do not use or store the phone in dusty, dirty areas. Its moving parts can be damaged.
- Do not store the phone in hot areas. High temperatures can shorten the life of electronic devices, damage batteries, and warp or melt certain plastics.
- Do not store the phone in cold areas. When it warms up (to its normal temperature), moisture can form inside, which may damage electronic circuit boards.
- Do not drop, knock or shake the phone. Rough handling can break internal circuit boards.
- Do not use harsh chemicals, cleaning solvents, or strong detergents to clean the phone.
- Do not paint the phone. Paint can clog the moving parts and prevent proper operation.
- Use only the supplied or an approved replacement antenna. Unauthorised antennas, modifications or attachments could damage the phone and may violate regulations governing radio devices.

All of the above suggestions apply equally to the product, battery, charger or any accessory.

6. BATTERY INFORMATION

Note: A new battery's full performance is achieved only after two or three complete charge and discharge cycles! The battery can be charged and discharged hundreds of times but it will eventually wear out. When the operating time (talk-time and standby time) is noticeably shorter than normal, it is time to buy a new battery. Use only batteries approved by the phone manufacturer and recharge the battery only with the chargers approved by the manufacturer.

Unplug the charger when not in use. Do not leave the battery connected to a charger for longer than a week, since overcharging may shorten its lifetime.

If left unused a fully charged battery will discharge itself over time. Temperature extremes can affect the ability of your battery to charge.

For good operation times with Ni-Cd/NiMH batteries, discharge the battery from time to time by leaving the product switched on until it turns itself off (or by using the battery discharge facility of any approved accessory available for the product).

Do not attempt to discharge the battery by any other means. Use the battery only for its intended purpose. Never use any charger or battery which is damaged.

Do not short-circuit the battery. Accidental short-circuiting can occur when a metallic object (coin, clip or pen) causes direct connection of the + and - terminals of the battery (metal strips on the battery) for example when you carry a spare battery in your pocket or purse. Short-circuiting the terminals may damage the battery or the connecting object.

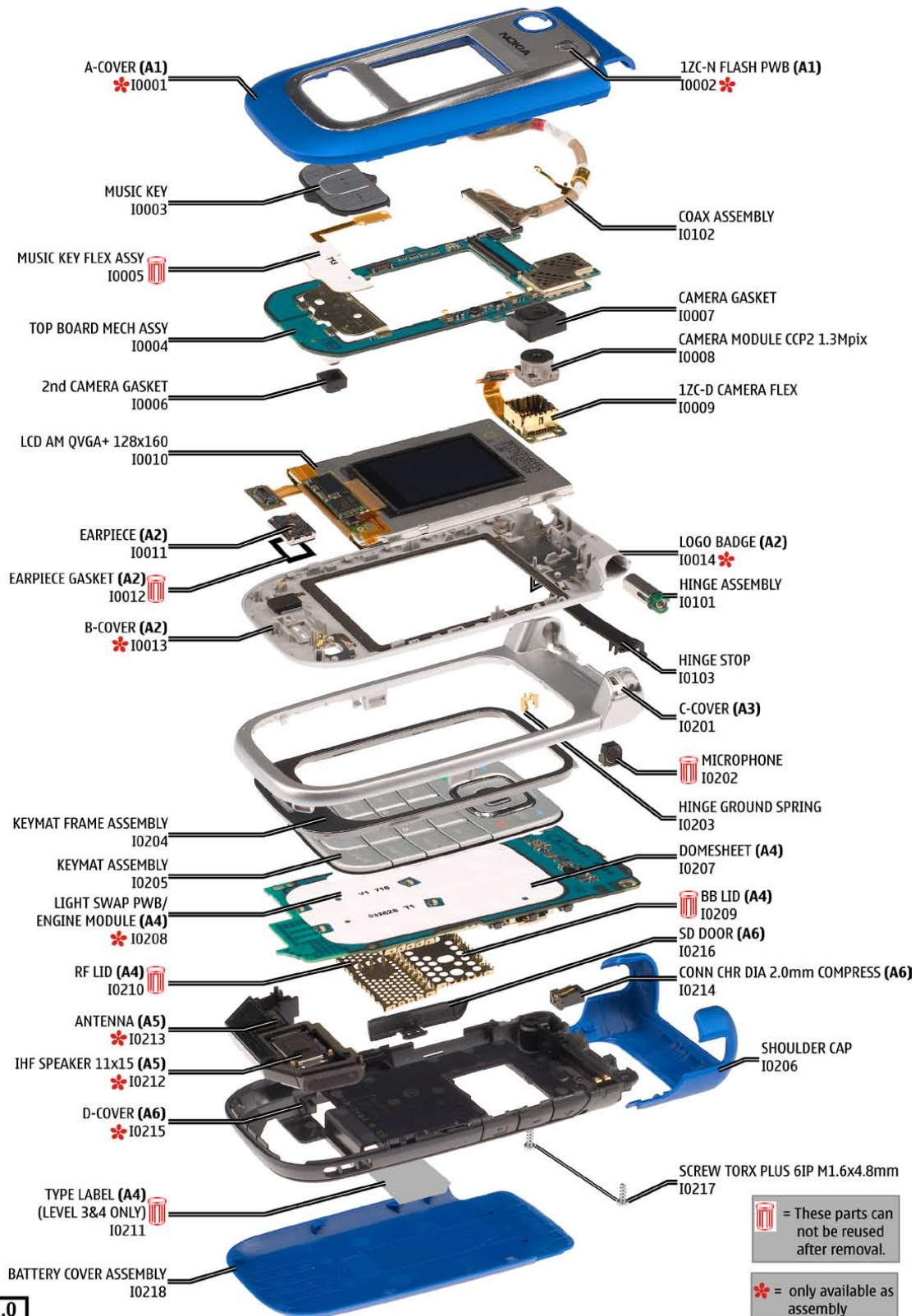
Leaving the battery in hot or cold places, such as in a closed car in summer or winter conditions, will reduce the capacity and lifetime of the battery. Always try to keep the battery between 15°C and 25°C (59°F and 77°F). A phone with a hot or cold battery may temporarily not work, even when the battery is fully charged. Batteries' performance is particularly limited in temperatures well below freezing.

Do not dispose batteries in a fire! Dispose of batteries according to local regulations (e.g. recycling). Do not dispose as household waste.

7. EXPLODED VIEW

See corresponding ITEM/CIRCUIT REF in the Spare Parts Service Bulletins on NOL.

6267 RM-210 EXPLODED VIEW



Ver. 2.0

8. SPARE PARTS OVERVIEW

6267 RM-210 SPARE PARTS OVERVIEW

A1=A-COVER ASSY (I0001-I0002)

A-COVER (A1) I0001

1ZC-N FLASH PWB (A1) I0002

A2=B-COVER ASSY (I0011-I0014)

EARPIECE GASKET (A2) I0012

EARPIECE (A2) I0011

B-COVER (A2) I0013

LOGO BADGE (A2) I0014

A3=C-COVER ASSY (I0201-I0202)

C-COVER (A3) I0201

A5=ANTENNA ASSY (I0212-I0213)

ANTENNA (A5) I0213

IHF SPEAKER 11x15 (A5) I0212

A4=1ZC LIGHT SWAP PACKAGE (I0207-I0211) (LEVEL 3&4 ONLY)

LIGHT SWAP PWB/ENGINE MODULE (A4) I0208

DOMESHEET (A4) I0207

BB LID (A4) I0209

RF LID (A4) I0210

TYPE LABEL (A4) (LEVEL 3&4 ONLY) I0211

A6=D-COVER ASSY (I0214-I0216) (LEVEL 3&4 ONLY)

SD DOOR (A6) I0216

D-COVER (A6) I0215

CONN CHR DIA 2.0mm COMPRESS (A6) I0214

Other Components:

MICROPHONE I0202

HINGE ASSEMBLY I0101

HINGE STOP I0103

SHOULDER CAP I0206

LCD AM QVGA+ 128x160 I0010

MUSIC KEY I0003

CAMERA GASKET I0007

COAX ASSEMBLY I0102

CAMERA MODULE CCP2 1.3Mpix I0008

1ZC-D CAMERA FLEX I0009

MUSIC KEY FLEX ASSY I0005

TOP BOARD MECH ASSY I0004

2nd CAMERA GASKET I0006

KEYMAT FRAME ASSEMBLY I0204

KEYMAT ASSEMBLY I0205

BATTERY COVER ASSEMBLY (I0218)

SCREW TORX PLUS 6IP M1.6x4.8mm I0217

HINGE GROUND SPRING I0203

BATTERY COVER ASSEMBLY I0218

Ver. 2.0

Legend:

- = These parts can not be reused after removal.
- = only available as assembly

9. HANDLING WASTE / RECYCLING IN NOKIA REPAIR SERVICE

Please refer to the document

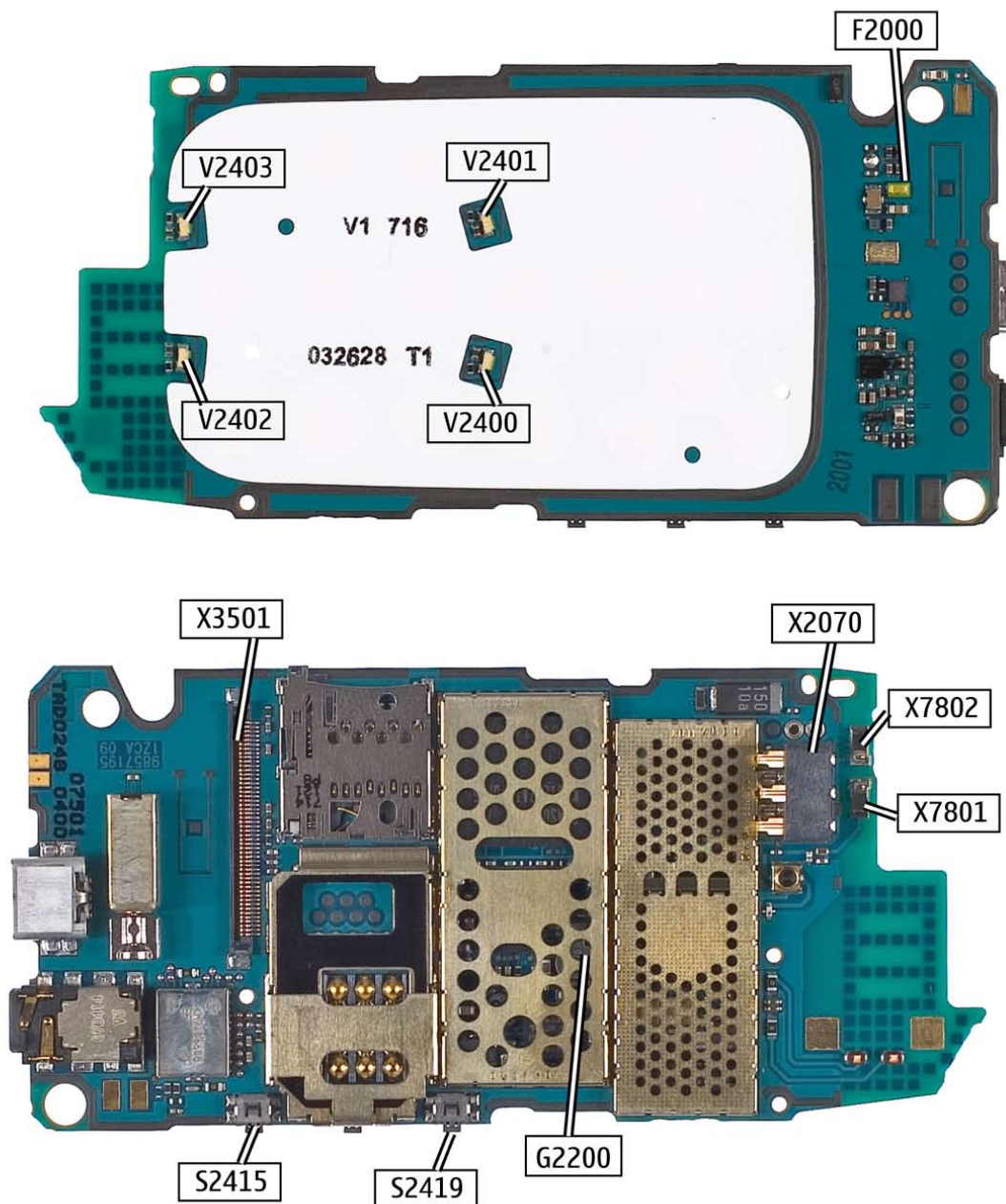
“Handling Waste in NOKIA Repair Service”

on your local delivery server e.g. NOL.

10.LEVEL 2 SOLDER COMPONENTS









6267 RM-210 Components overview

Solder components only for LEVEL 2



Ver. 1.0

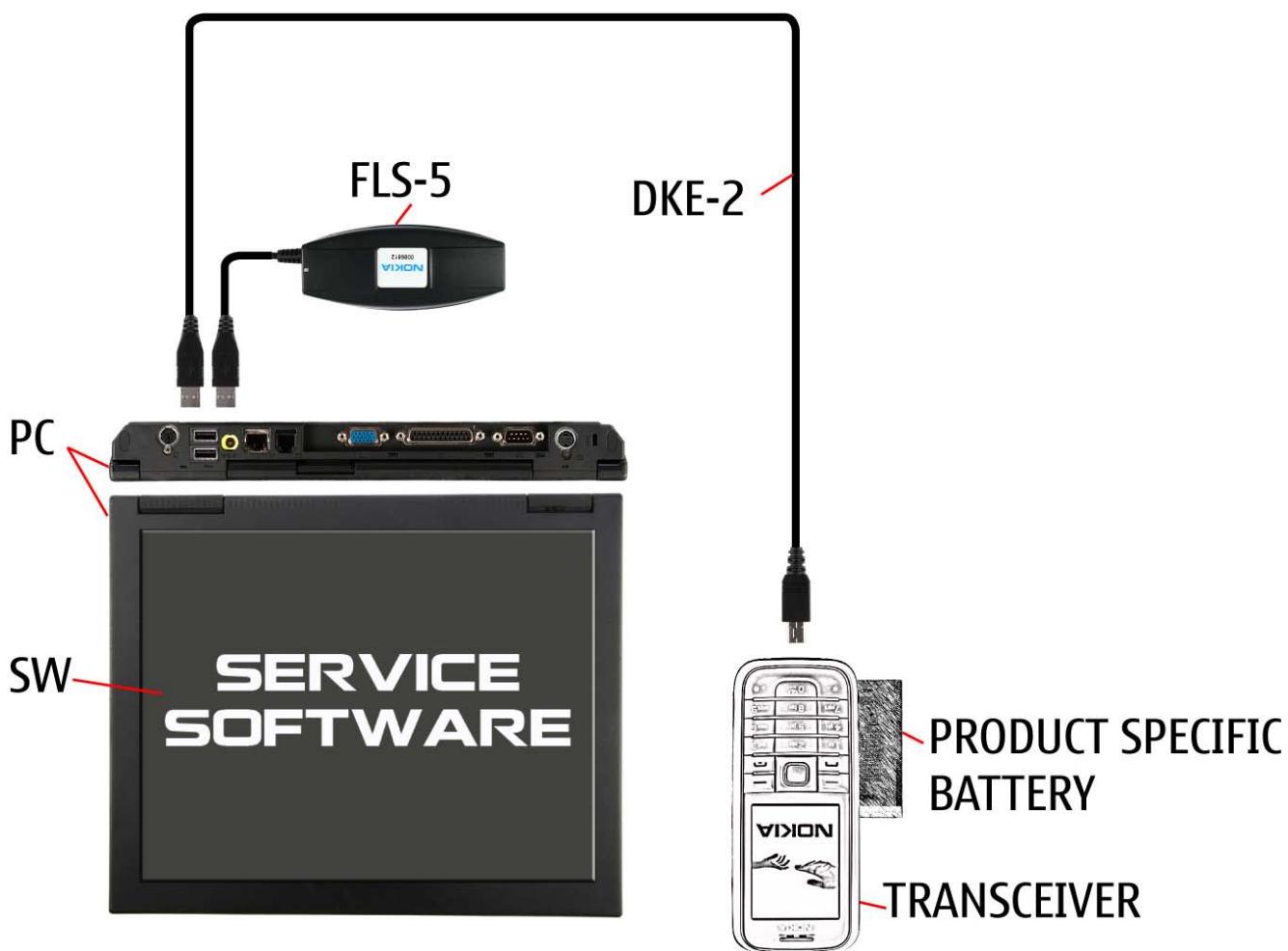
11.SERVICE TOOLS

 <p>FLS-5</p> <p>FLS-5 incl. ACF-8, Driver and User Guide Dongle and flash device incorporated into one package, developed specifically for POS use.</p>	 <p>ACF-8 Universal Power Supply is used to power FLS-4S.</p>	 <p>Travel Charger AC-4 Small and lightweight charger for fast charging of your phone battery.</p>
 <p>DKE-2 Service Cable to connect the PC with the mini USB connector.</p>	 <p>SS-45 Camera removal tool. One side is for disassembly, the other side for assembly.</p>	 <p>RJ-182 Soldering Jig</p>
 <p>Internal Battery BL-5c Inserted under the back cover, this Li-Ion battery provides power in a lightweight package.</p>	 <p>0772040 NMP Standard Toolkit (V2) For more informations refer to the Service Bulletin (SB-011) on NOKIA Online. Supplier or manufacturer contacts for tool re-order can be found in "Recommended service equipment" document on NOKIA Online.</p>	

12.SW-UPDATE

Flash Concept – (Point of Sales)

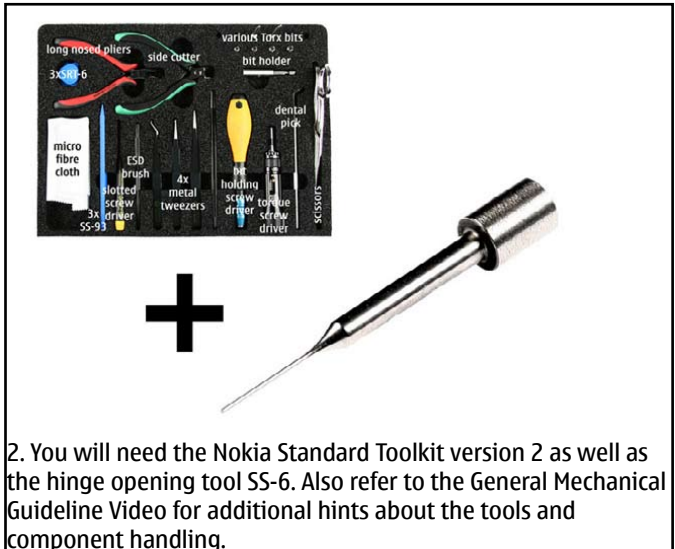
To use FLS-5 Flash Dongle you have to follow the user guide inside the sales package. Please check always for the latest version of flash software, which is available on [NOKIA Online](#).



13. UPPER BLOCK DISASSEMBLY



1. Nokia 6267 Upper Block Disassembly.



2. You will need the Nokia Standard Toolkit version 2 as well as the hinge opening tool SS-6. Also refer to the General Mechanical Guideline Video for additional hints about the tools and component handling.



3. Remove the BATTERY COVER.



4. Unlock the clips of the SHOULDER CAP...



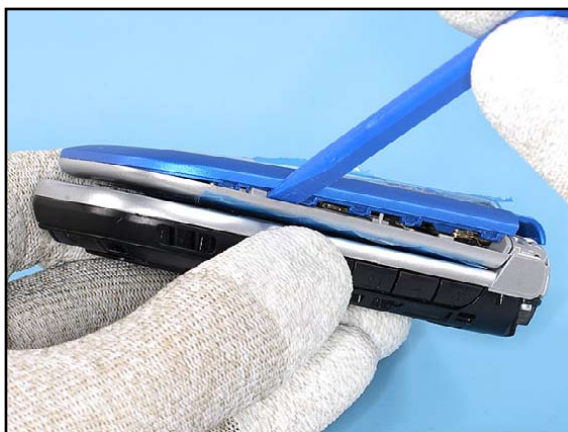
5. ...on both sides with the SS-93.



6. Now it can be removed easily.



7. Gently detach the A-COVER ASSY, beginning on the top side with the SS-93.



8. Carefully pry open the 5 clips of the A-COVER ASSY...



9. ...on both sides with the SS-93.



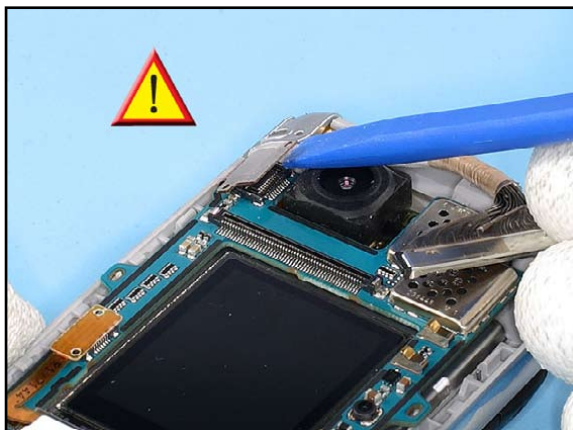
10. Now lift up the A-COVER ASSY, beginning from the hinge side in order to release the last 2 clips.



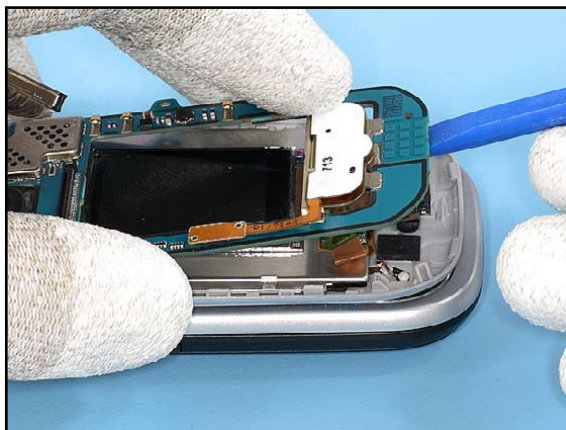
11. The MUSIC KEY can be removed easily.



12. Lever up the COAX ASSEMBLY with the angled tweezers. It is very important not to bend these connector, otherwise it becomes unusable.



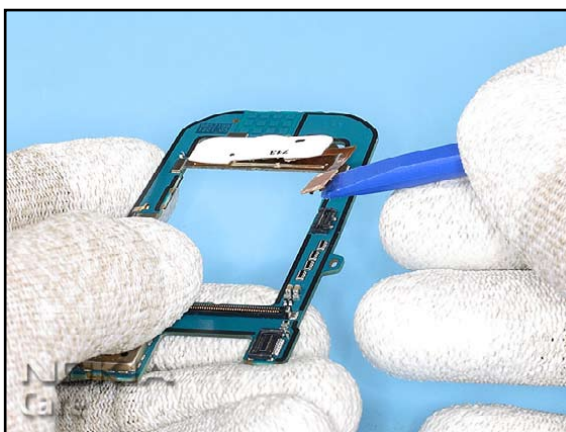
13. Carefully open the flex connector with the SS-93. Avoid mechanical stress to the connector and the flex foil.



14. Carefully lever up the TOP BOARD MECH ASSY. Keep in mind that a flex foil is still connected.



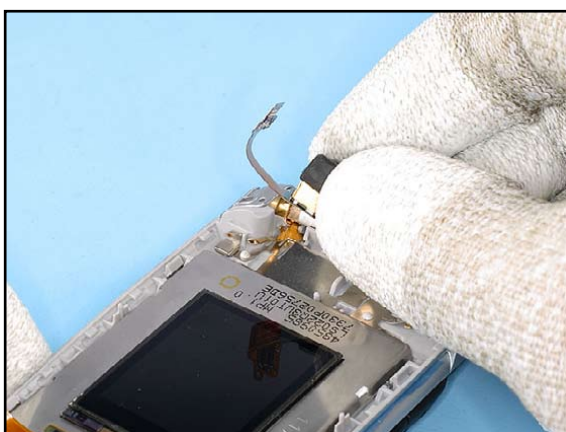
15. Flip over the TOP BOARD MECH ASSY now. Disconnect the flex connector with the SS-93.



16. For replacement of the MUSIC KEY FLEX ASSY, disconnect the flex connector first.



17. Now carefully lever up the glued in KEY FLEX ASSY.



18. Lift out the 1ZC-D CAMERA FLEX. Mind the sharp metal latches on order to avoid cutting the delicate flex foil. It is not necessary to remove the camera flex if the CAMERA MODULE should be replaced only. In this case simply peel up the CAMERA GASKET and lift out the CAMERA MODULE with the SS-45.



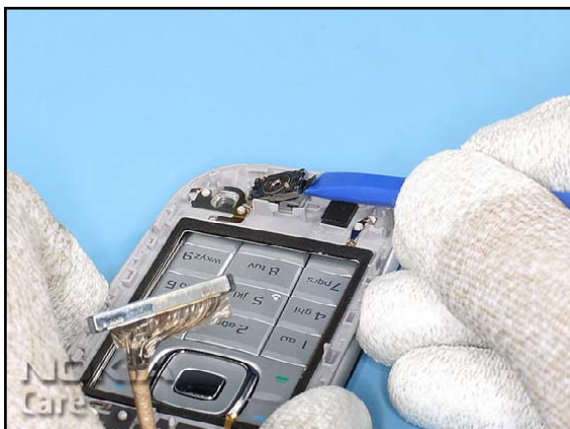
19. The CAMERA GASKET can be removed.



20. Unlock the plastic clips of the LCD MODULE.



21. Now flip out the LCD MODULE.



22. Ease out and remove the EARPIECE with the SS-93.



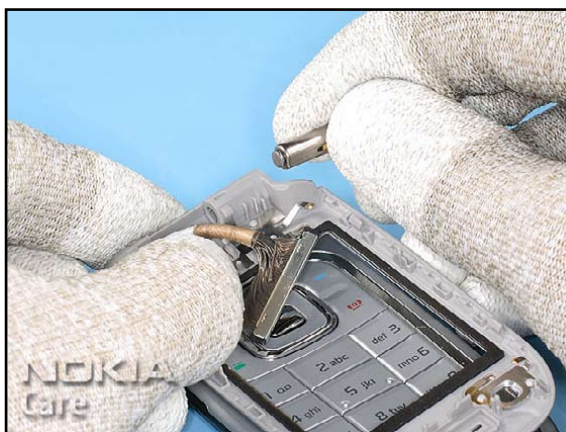
23. Compress the spring of the HINGE with the SS-6...



24. ...and lift the now released side of the C-COVER. Hold the HINGE into position while moving the C-COVER.



25. The HINGE can be pushed out with a Torx bit...



26. ...now it can be removed easily.



27. Note that the parts are still connected with the coax cable.

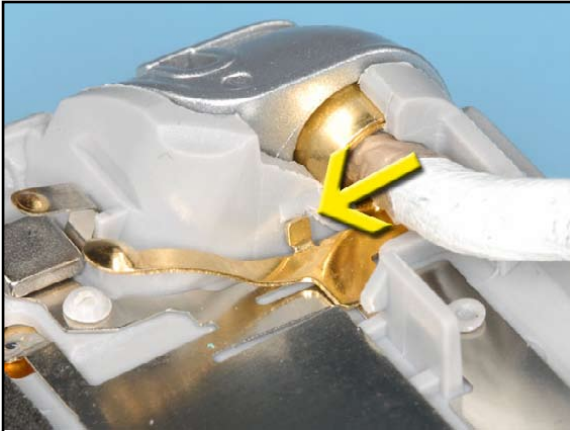


28. Carefully pull out the coax grounding clip.

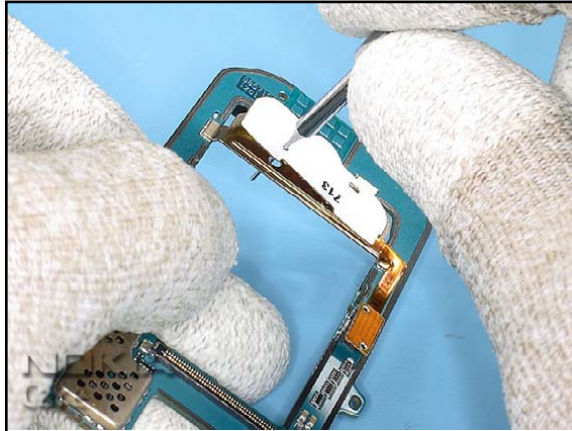


29. For the replacement of the COAX CABLE the upper and the lower block must be disassembled. Also the HINGE STOP must be removed. The disassembly procedure is now completed.

14. UPPER BLOCK ASSEMBLY HINTS



1. Assembly hints: Mind the correct positioning of the COAX ASSEMBLY before going on. Note that the grounding clip is positioned correctly. It must be clicked into its place as shown.

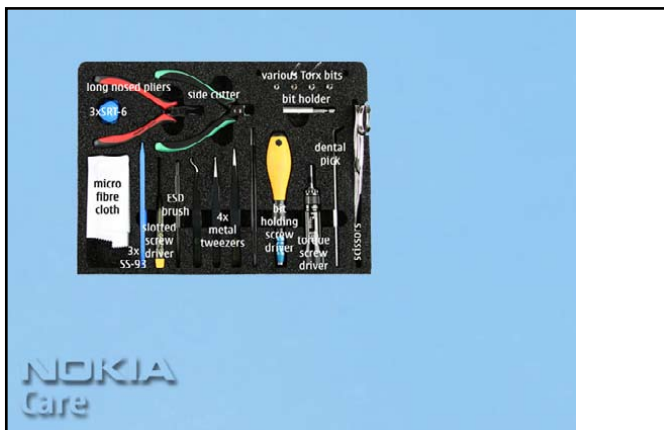


2. Use the SS-6 for correct replacement of the MUSIC KEY FLEX ASSY.

15. LOWER BLOCK DISASSEMBLY



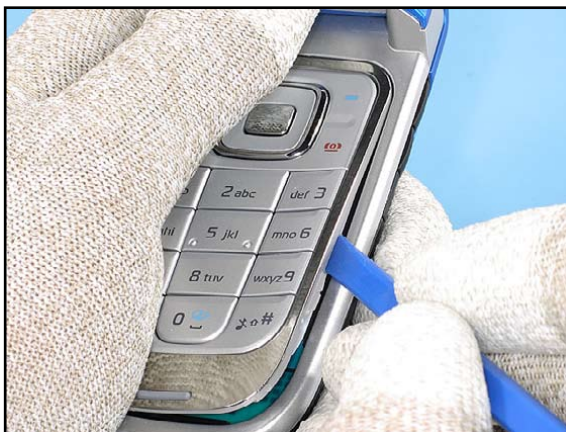
1. Nokia 6267 Lower Block Disassembly.



2. You will need the Nokia Standard Toolkit version 2. Also refer to the General Mechanical Guideline Video for additional hints about the tools and component handling.



3. Remove the BATTERY COVER ASSY.



4. A procedure how to remove the KEYMAT FRAME and the KEAMAT without disassembling the phone is shown here. Carefully unlock the clips of the KEYMAT FRAME with the SS-93...



5. ...on both sides.



6. Now the KEYMAT FRAME and the KEYMAT can be removed.



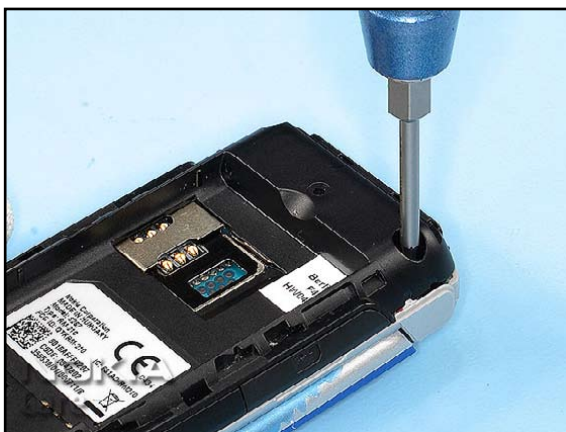
7. Release the clips of the SHOULDER CAP...



8. ...on both sides.



9. Now the SHOULDER CAP can be released easily.



10. Unscrew the 2 screws (A screw order is not recommended).
For assembly tighten the screws with a torque of 18Ncm.



11. Remove these screws before continue.



12. Unlock the clips of the D-COVER...



13. ...on both sides.



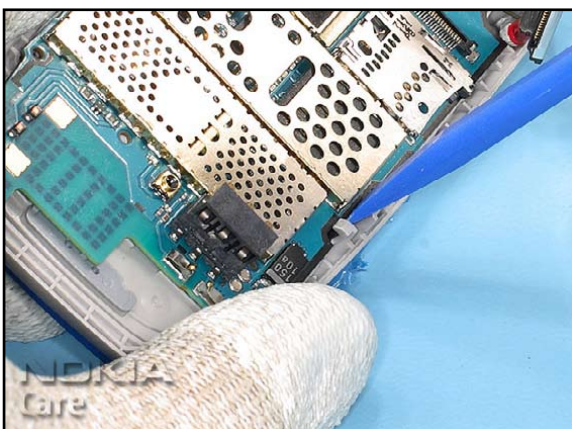
14. Now the D-COVER can be released easily.



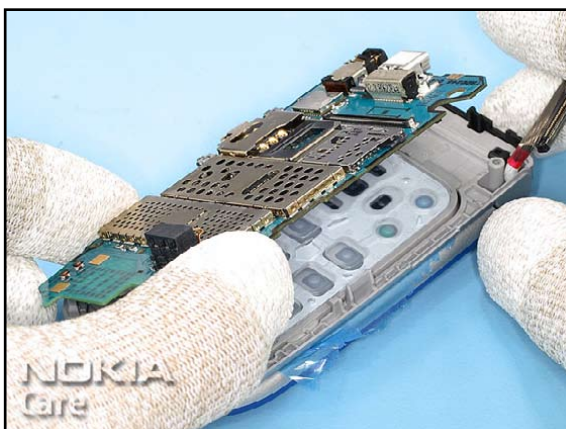
15. Push out the ANTENNA ASSY.



16. Carefully open the connector as shown.



17. Release this clip with the SS-93.



18. Now the ENGINE MODULE can be removed.



19. The KEYMAT can be removed easily, if not already done.



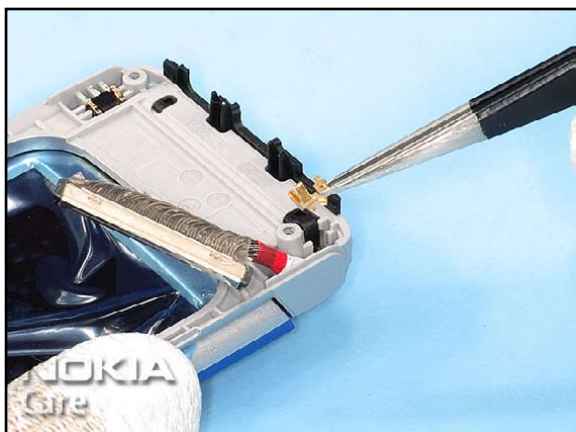
20. Also remove the KEYMAT FRAME ASSY.



21. Lift out the connector with the DC PLUG.



22. Ease out the HINGE GROUNDING CLIP carefully with a straight bladed screwdriver.. Do not scratch the coax cable underneath.



23. Now remove it with tweezers.



24. Ease out the MICROPHONE with the dental pick.



25. Remove it with tweezers now. The disassembly procedure is now completed.